

# MOLE SAGOMATE LINEA 20 / MOLE SAGOMATE LINEA 20

KIT PER **GRANITO** / KIT PER **MARMO**  
**GRANITE SET / MARBLE SET**

Linea completa di mole a profilo con diametro minimo pari a 20 mm da una sgrossatura veloce ad una lucidatura brillante grazie a tecnologie brevettate Marmoelettromeccanica. Sviluppata per consentire la lavorazione dei bordi dei fori all'interno dei lavelli fino ad un raggio minimo di 10 mm e realizzate con tecnologia a fascia continua sinterizzata per una lunga durata. Grazie al perfetto allineamento di tutto il Kit rispetto all'asse "Z", alle quote indicate su ogni utensile ed ai parametri di lavorazione, il settaggio sulla Vostra macchina CNC non è mai stato così semplice.

This line is composed of profile wheels with the minimum diameter of 20 mm from fast grinding to brilliant polishing thanks to Marmoelettromeccanica patented technologies. These wheels allow to work on internal edge of sink holes till a minimum radius of 10mm. They are made according to the sintered continuous rim technology to grant a longer lifespan.

Thanks to Z axis alignment of the complete wheel set, to the measures indicated on each wheel and to our working parameters, your CNC machine set up has never been so easy.

## PROFILI STANDARD / STANDARD PROFILES



## SPECIFICHE TECNICHE / TECHNICAL DATA

Attacco 1/2" Gas.  
1/2" Gas fitting.



!  
Su richiesta  
è disponibile  
qualsiasi altro  
profilo

Available any  
other profile  
on request

## POS. 1-2-3



## POS. 4-5-6



### ZENITH

#### SGROSSATURA

Le mole per la profilatura che garantiscono eccezionale potere di asportazione e costante mantenimento del profilo per tutta la loro durata, grazie alle nostre tecnologie innovative. Per granito, agglomerati di quarzo e pietre dure.

#### GRINDING

Our wheels more suitable for moderate productions. They provide the best compromise of durability and cost. For granite, quartz and hard stones.

### BIPOWER

#### LA MOLA RETTIFICATRICE CHE NON SI DEFORMA

La mola indeformabile per una perfetta rettifica del profilo. Grazie a questa mola le successive mole lucidanti potranno lavorare in condizioni ottimali per una maggiore durata ed il massimo grado di lucentezza finale. Per granito, agglomerati di quarzo, marmi e pietre.

#### THE RECTIFICATION WHEEL THAT NEVER LOSES ITS SHAPE

The non-deformable wheel for the perfect profile rectification. Thanks to its work the following polishing wheels will work in ideal conditions, have a longer lifespan and grant the perfect final polishing. For granite, quartz, marble and hard stones.

### LONG LIFE

#### L'INNOVATIVO SISTEMA DI LUCIDATURA

Costruite con pregiatissimo diamante stampato su corpo elastico, garantiscono una serie di vantaggi quali lunghissima durata, tempi di lavorazione dimezzati, totale assenza di righe, eccezionale grado di lucentezza con risultati insuperabili su marmi, graniti ed agglomerati di quarzo. Per granito, agglomerati di quarzo, marmi e pietre.

#### THE INNOVATIVE POLISHING SYSTEM

Made with precious diamonds molded onto an elastic rubber core, these tools offer multiply advantages: long life span, reduced process times, absence of lines, outstanding polish and deep gloss on marble, granites and quartz. For granite, quartz, marble and other stones.

## POS. 1-2-3



## POS. 4-5-6



### ELETTROLITICA / ELECTROPLATED

#### SGROSSATURA MARMO

Le mole elettrolitiche, costruite secondo i più moderni ed avanzati sistemi di elettrodeposizione, consentono un ottimo potere di asportazione ed una lunga durata. Per marmi e pietre tenere.

#### GRINDING - MARBLE

Our electroplated wheels are made following the modern and innovative electroplated process which grants a very good grinding power and a long lifespan. For marble and soft stones.

### BIPOWER

#### LA MOLA RETTIFICATRICE CHE NON SI DEFORMA

La mola indeformabile per una perfetta rettifica del profilo. Grazie a questa mola le successive mole lucidanti potranno lavorare in condizioni ottimali per una maggiore durata ed il massimo grado di lucentezza finale. Per granito, agglomerati di quarzo, marmi e pietre.

#### THE RECTIFICATION WHEEL THAT NEVER LOSES ITS SHAPE

The non-deformable wheel for the perfect profile rectification. Thanks to its work the following polishing wheels will work in ideal conditions, have a longer lifespan and grant the perfect final polishing. For granite, quartz, marble and hard stones.

### LONG LIFE

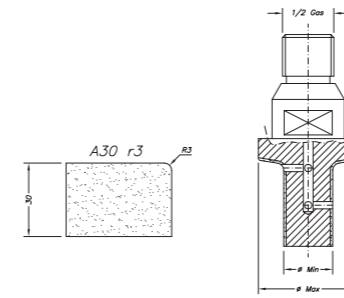
#### L'INNOVATIVO SISTEMA DI LUCIDATURA

Costruite con pregiatissimo diamante stampato su corpo elastico, garantiscono una serie di vantaggi quali lunghissima durata, tempi di lavorazione dimezzati, totale assenza di righe, eccezionale grado di lucentezza con risultati insuperabili su marmi, graniti ed agglomerati di quarzo. Per granito, agglomerati di quarzo, marmi e pietre.

#### THE INNOVATIVE POLISHING SYSTEM

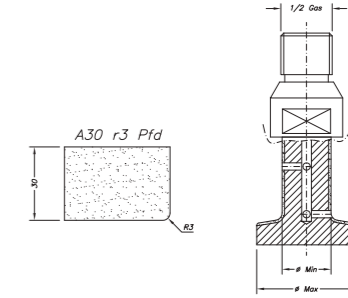
Made with precious diamonds molded onto an elastic rubber core, these tools offer multiply advantages: long life span, reduced process times, absence of lines, outstanding polish and deep gloss on marble, granites and quartz. For granite, quartz, marble and other stones.

# POS. 5F



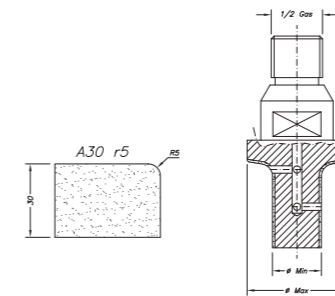
A30 r3

COD.	TIPO MOLA WHEEL TYPE	Ø MIN	Ø MAX	POS.	MATERIALE MATERIAL
SC21004	Zenith	20	40	1	●●●
SC22004	Zenith	20	40	2	●●●
SC23004	Bi Power	20	40	3	●●●●
SC24004	Long Life	20	40	4	●●●●
SC25004	Long Life	20	40	5	●●●●
SC26004	Long Life	20	40	6	●●●●
SC75009	Perfector	20	20	-	●●●●



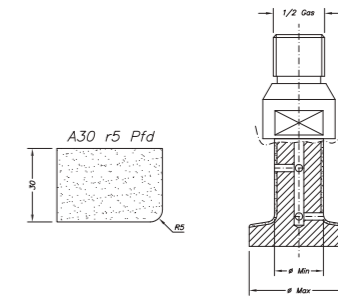
A30 r3 Pfd

COD.	TIPO MOLA WHEEL TYPE	Ø MIN	Ø MAX	POS.	MATERIALE MATERIAL
SC21011	Zenith	20	40	1	●●●
SC22011	Zenith	20	40	2	●●●
SC23011	Bi Power	20	40	3	●●●●
SC24011	Long Life	20	40	4	●●●●
SC25011	Long Life	20	40	5	●●●●
SC26011	Long Life	20	40	6	●●●●
SC75009	Perfector	20	20	-	●●●●



A30 r5

COD.	TIPO MOLA WHEEL TYPE	Ø MIN	Ø MAX	POS.	MATERIALE MATERIAL
SC21112	Zenith	20	40	1	●●●
SC22112	Zenith	20	40	2	●●●
SC23112	Bi Power	20	40	3	●●●●
SC24112	Long Life	20	40	4	●●●●
SC25112	Long Life	20	40	5	●●●●
SC26112	Long Life	20	40	6	●●●●
SC75009	Perfector	20	20	-	●●●●



A30 r5 Pfd

COD.	TIPO MOLA WHEEL TYPE	Ø MIN	Ø MAX	POS.	MATERIALE MATERIAL
SC21012	Zenith	20	40	1	●●●
SC22012	Zenith	20	40	2	●●●
SC23012	Bi Power	20	40	3	●●●●
SC24012	Long Life	20	40	4	●●●●
SC25012	Long Life	20	40	5	●●●●
SC26012	Long Life	20	40	6	●●●●
SC75009	Perfector	20	20	-	●●●●

## PERFECTOR

### LA RISPOSTA AL PROBLEMA DELLE RIGHE SUI BORDI DIRITTI

La mola PERFECTOR WHEEL è appositamente concepita per eliminare tutte le righe presenti sui bordi diritti lucidati con mole sagomate, grazie ad una particolare struttura ed un perfetto equilibrio tra durezza e flessibilità.

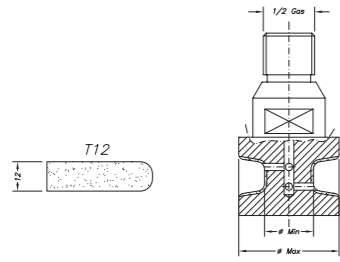
### THE ANSWER TO THE PROBLEM OF LINES ON POLISHED STRAIGHT EDGES

The PERFECTOR WHEEL is made to eliminate all lines on polished straight edges, thanks to its peculiar structure and the perfect equilibrium between hardness and flexibility.

LEGENDA MATERIALE  
LEGEND MATERIAL:

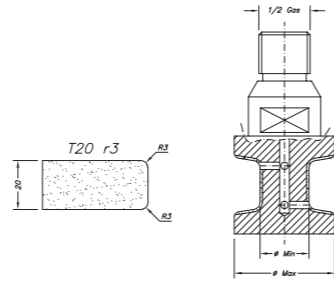


MOLE SAGOMATE LINEA 20 / LINE 20 PROFILE WHEELS



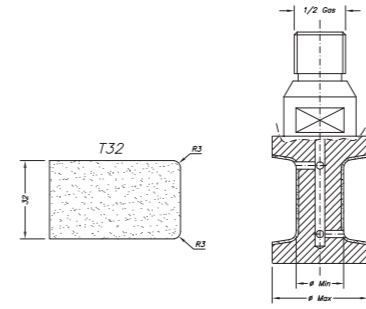
T12

COD.	TIPO MOLA WHEEL TYPE	Ø MIN	Ø MAX	POS.	MATERIALE MATERIAL
SC21243	Zenith	20	40	1	●●●
SC22243	Zenith	20	40	2	●●●
SC23243	Bi Power	20	40	3	●●●●
SC24243	Long Life	20	40	4	●●●●●
SC25243	Long Life	20	40	5	●●●●●●
SC26243	Long Life	20	40	6	●●●●●●●
SC75009	Perfactor	20	20	-	●●●●



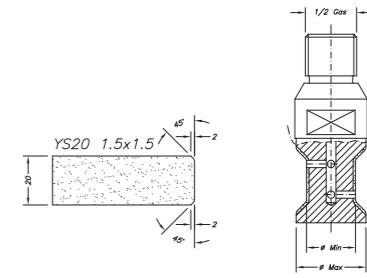
T20 r3

COD.	TIPO MOLA WHEEL TYPE	Ø MIN	Ø MAX	POS.	MATERIALE MATERIAL
SC21114	Zenith	20	40	1	●●●
SC22114	Zenith	20	40	2	●●●
SC23114	Bi Power	20	40	3	●●●●
SC24114	Long Life	20	40	4	●●●●●
SC25114	Long Life	20	40	5	●●●●●●
SC26114	Long Life	20	40	6	●●●●●●●
SC75009	Perfactor	20	20	-	●●●●



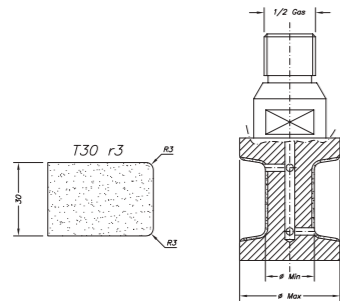
T32

COD.	TIPO MOLA WHEEL TYPE	Ø MIN	Ø MAX	POS.	MATERIALE MATERIAL
SC21D017	Zenith	20	40	1	●●●
SC22D017	Zenith	20	40	2	●●●
SC23D017	Bi Power	20	40	3	●●●●
SC24D017	Long Life	20	40	4	●●●●●
SC25D017	Long Life	20	40	5	●●●●●●
SC26D017	Long Life	20	40	6	●●●●●●●
SC75009	Perfactor	20	20	-	●●●●



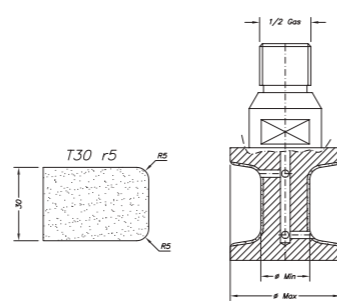
YS20 1,5x1,5

COD.	TIPO MOLA WHEEL TYPE	Ø MIN	Ø MAX	POS.	MATERIALE MATERIAL
SC21D028	Zenith	20	30	1	●●●
SC22D028	Zenith	20	30	2	●●●
SC23D028	Bi Power	20	30	3	●●●●
SC24D028	Long Life	20	30	4	●●●●●
SC25D028	Long Life	20	30	5	●●●●●●
SC26D028	Long Life	20	30	6	●●●●●●●
SC75009	Perfactor	20	20	-	●●●●



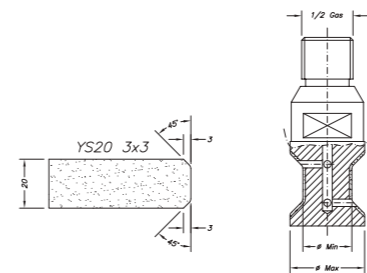
T30 r3

COD.	TIPO MOLA WHEEL TYPE	Ø MIN	Ø MAX	POS.	MATERIALE MATERIAL
SC21115	Zenith	20	40	1	●●●
SC22115	Zenith	20	40	2	●●●
SC23115	Bi Power	20	40	3	●●●●
SC24115	Long Life	20	40	4	●●●●●
SC25115	Long Life	20	40	5	●●●●●●
SC26115	Long Life	20	40	6	●●●●●●●
SC75009	Perfactor	20	20	-	●●●●



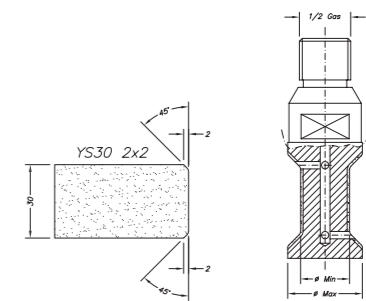
T30 r5

COD.	TIPO MOLA WHEEL TYPE	Ø MIN	Ø MAX	POS.	MATERIALE MATERIAL
SC21082	Zenith	20	45	1	●●●
SC22082	Zenith	20	45	2	●●●
SC23082	Bi Power	20	45	3	●●●●
SC24082	Long Life	20	45	4	●●●●●
SC25082	Long Life	20	45	5	●●●●●●
SC26082	Long Life	20	45	6	●●●●●●●
SC75009	Perfactor	20	20	-	●●●●



YS20 3x3

COD.	TIPO MOLA WHEEL TYPE	Ø MIN	Ø MAX	POS.	MATERIALE MATERIAL
SC21120	Zenith	20	30	1	●●●
SC22120	Zenith	20	30	2	●●●
SC23120	Bi Power	20	30	3	●●●●
SC24120	Long Life	20	30	4	●●●●●
SC25120	Long Life	20	30	5	●●●●●●
SC26120	Long Life	20	30	6	●●●●●●●
SC75009	Perfactor	20	20	-	●●●●



YS30 2x2

COD.	TIPO MOLA WHEEL TYPE	Ø MIN	Ø MAX	POS.	MATERIALE MATERIAL
SC21122	Zenith	20	30	1	●●●
SC22122	Zenith	20	30	2	●●●
SC23122	Bi Power	20	30	3	●●●●
SC24122	Long Life	20	30	4	●●●●●
SC25122	Long Life	20	30	5	●●●●●●
SC26122	Long Life	20	30	6	●●●●●●●
SC75009	Perfactor	20	20	-	●●●●

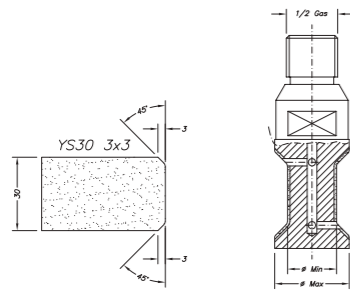
LEGENDA MATERIALE  
LEGEND MATERIAL:



LEGENDA MATERIALE  
LEGEND MATERIAL:

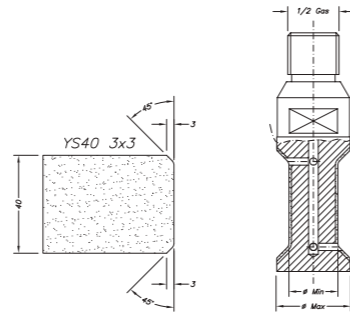


MOLE SAGOMATE LINEA 20 / LINE 20 PROFILE WHEELS



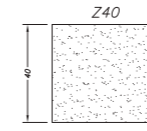
YS30 3x3

COD.	TIPO MOLA WHEEL TYPE	Ø MIN	Ø MAX	POS.	MATERIALE MATERIAL
SC21121	Zenith	20	32	1	●●●
SC22121	Zenith	20	32	2	●●●
SC23121	Bi Power	20	32	3	●●●●
SC24121	Long Life	20	32	4	●●●●
SC25121	Long Life	20	32	5	●●●●
SC26121	Long Life	20	32	6	●●●●
SC75009	Perfactor	20	20	-	●●●●



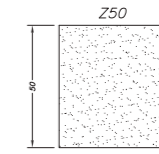
YS40 3x3

COD.	TIPO MOLA WHEEL TYPE	Ø MIN	Ø MAX	POS.	MATERIALE MATERIAL
SC21124	Zenith	20	32	1	●●●
SC22124	Zenith	20	32	2	●●●
SC23124	Bi Power	20	32	3	●●●●
SC24124	Long Life	20	32	4	●●●●
SC25124	Long Life	20	32	5	●●●●
SC26124	Long Life	20	32	6	●●●●
SC75010	Perfactor	20	20	-	●●●●



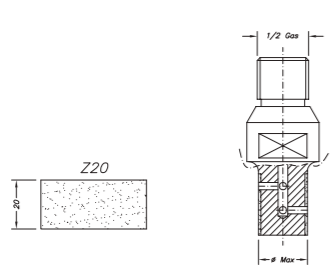
Z40

COD.	TIPO MOLA WHEEL TYPE	Ø MIN	Ø MAX	POS.	MATERIALE MATERIAL
SC21035	Zenith	20	20	1	●●●
SC22035	Zenith	20	20	2	●●●
SC23035	Bi Power	20	20	3	●●●●
SC24035	Long Life	20	20	4	●●●●
SC25035	Long Life	20	20	5	●●●●
SC26035	Long Life	20	20	6	●●●●
SC75010	Perfactor	20	20	-	●●●●



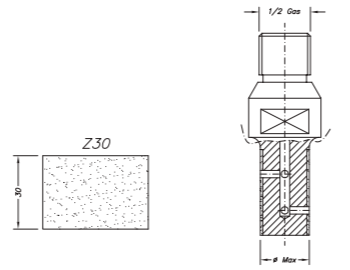
Z50

COD.	TIPO MOLA WHEEL TYPE	Ø MIN	Ø MAX	POS.	MATERIALE MATERIAL
SC21036	Zenith	20	20	1	●●●
SC22036	Zenith	20	20	2	●●●
SC23036	Bi Power	20	20	3	●●●●
SC24036	Long Life	20	20	4	●●●●
SC25036	Long Life	20	20	5	●●●●
SC26036	Long Life	20	20	6	●●●●
SC75010	Perfactor	20	20	-	●●●●



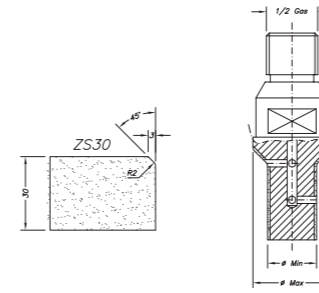
Z20

COD.	TIPO MOLA WHEEL TYPE	Ø MIN	Ø MAX	POS.	MATERIALE MATERIAL
SC21033	Zenith	20	20	1	●●●
SC22033	Zenith	20	20	2	●●●
SC23033	Bi Power	20	20	3	●●●●
SC24033	Long Life	20	20	4	●●●●
SC25033	Long Life	20	20	5	●●●●
SC26033	Long Life	20	20	6	●●●●
SC75009	Perfactor	20	20	-	●●●●



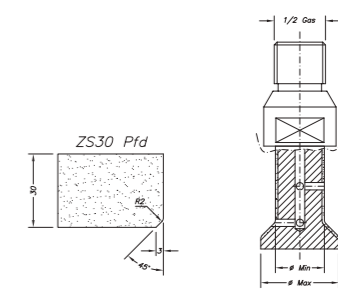
Z30

COD.	TIPO MOLA WHEEL TYPE	Ø MIN	Ø MAX	POS.	MATERIALE MATERIAL
SC21034	Zenith	20	20	1	●●●
SC22034	Zenith	20	20	2	●●●
SC23034	Bi Power	20	20	3	●●●●
SC24034	Long Life	20	20	4	●●●●
SC25034	Long Life	20	20	5	●●●●
SC26034	Long Life	20	20	6	●●●●
SC75009	Perfactor	20	20	-	●●●●



ZS30

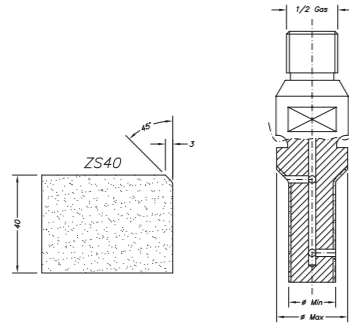
COD.	TIPO MOLA WHEEL TYPE	Ø MIN	Ø MAX	POS.	MATERIALE MATERIAL
SC21041	Zenith	20	32	1	●●●
SC22041	Zenith	20	32	2	●●●
SC23041	Bi Power	20	32	3	●●●●
SC24041	Long Life	20	32	4	●●●●
SC25041	Long Life	20	32	5	●●●●
SC26041	Long Life	20	32	6	●●●●
SC75009	Perfactor	20	20	-	●●●●



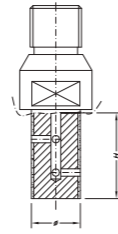
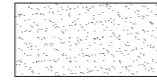
ZS30 Pfd

COD.	TIPO MOLA WHEEL TYPE	Ø MIN	Ø MAX	POS.	MATERIALE MATERIAL
SC21043	Zenith	20	32	1	●●●
SC22043	Zenith	20	32	2	●●●
SC23043	Bi Power	20	32	3	●●●●
SC24043	Long Life	20	32	4	●●●●
SC25043	Long Life	20	32	5	●●●●
SC26043	Long Life	20	32	6	●●●●
SC75009	Perfactor	20	20	-	●●●●

MOLE SAGOMATE LINEA 20 / LINE 20 PROFILE WHEELS



ZS40



PERFECTOR



COD.	TIPO MOLA WHEEL TYPE	Ø MIN	Ø MAX	POS.	MATERIALE MATERIAL
SC21042	Zenith	20	30	1	○ ○ ○
SC22042	Zenith	20	30	2	○ ○ ○
SC23042	Bi Power	20	30	3	○ ○ ○ ○
SC24042	Long Life	20	30	4	○ ○ ○ ○
SC25042	Long Life	20	30	5	○ ○ ○ ○
SC26042	Long Life	20	30	6	○ ○ ○ ○
SC75010	Perfector	20	20	-	○ ○ ○ ○

COD.	TIPO MOLA WHEEL TYPE	Ø	H	POS.	MATERIALE MATERIAL
SC75009	Zenith	20	30	1	○ ○ ○ ○
SC75010	Zenith	20	40	2	○ ○ ○ ○

Appositamente concepita per eliminare le righe su bordi dritti lucidati con mole sagomate.

Studied to eliminate lines on straight edges polished with profile wheels.