

# MOLE SAGOMATE LINEA 60 / LINE 60 PROFILE WHEELS

KIT PER **GRANITO** / KIT PER **MARMO**  
**GRANITE SET / MARBLE SET**

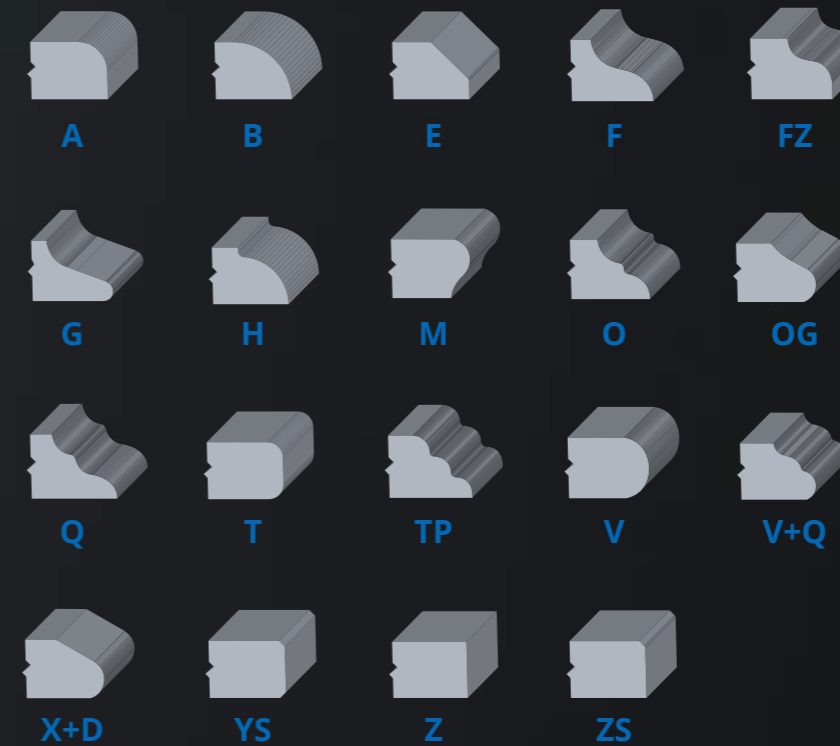
Linea completa di mole a profilo con diametro minimo pari a 62 mm da una sgrossatura veloce ad una lucidatura brillante. Grazie al perfetto allineamento di tutto il Kit rispetto all'asse "Z", alle quote indicate su ogni utensile ed ai parametri di lavorazione, il settaggio sulla Vostra macchina CNC non è mai stato così semplice.

Kit di mole per la profilatura che garantiscono il costante mantenimento del profilo per tutta la loro durata grazie alle nostre tecnologie innovative.

This line is composed of profile wheels with the minimum diameter of 62mm from fast grinding to brilliant polishing thanks to the Z axis alignment of the complete wheel set, to the measures written on each wheel and to our working parameters, your CNC machine set up has never been so easy.

The grinding profile wheels keep their shape over their entire lifespan thanks to our innovative technologies.

## PROFILI STANDARD / STANDARD PROFILES



**!**  
Su richiesta  
è disponibile  
qualsiasi altro  
profilo

Available any  
other profile  
on request



### SPECIFICHE TECNICHE / TECHNICAL DATA

Foro Standard 35 mm. Vedere capitolo **Adattatori** per fori Ø 20, 22, 25 e 30 mm  
Standard Bore 35 mm. See **Adaptors** chapter for bore Ø 20, 22, 25 e 30 mm

# POS. 00



**Mola Pre-Taglio /**  
Pre-Cutting Wheel

## FRANGISTONE

**LA MOLA BREVETTATA CHE TAGLIA COSTI E TEMPI**  
Per velocizzare i tempi di lavorazione offriamo l'innovativa e brevettata mola FRANGISTONE che frantumando già il 60% della pietra riduce costi e tempi di almeno quattro volte rispetto alla tecnologia tradizionale, garantendo una velocissima asportazione ed una lunga durata alle mole successive. Per granito, agglomerati di quarzo e pietre dure.

**THE PATENTED WHEEL THAT CUTS COSTS**  
For the purpose of shortening the working times we offer the new and patented FRANGISTONE wheel, in itself able to grind 60% of the stone, therefore reducing to one fourth at most the delays and expenses of each project. The durability of the second step wheel is also improved.  
For granite, quartz and hard stones.

# POS. 0



**SGROSSATURA VELOCE SU MATERIALI DURI**  
L'innovativa mola Razorstone, nata dalla tecnologia Frangistone, permette una velocità d'asportazione 5 volte superiore alle mole a settori tradizionali ed ha una durata nettamente superiore, garantendo una lunga durata anche alle mole successive.

**FAST GRINDING ON HARD MATERIALS**  
The new Razorstone wheel, born from Frangistone technology, allows a 5 time faster grinding than the traditional segmented wheels.  
It has a longer lifespan and grants it to the following wheels too.



## POS. 1-2-3



### ZENITH

#### SGROSSATURA

Le mole per la profilatura che garantiscono eccezionale potere di asportazione e costante mantenimento del profilo per tutta la loro durata, grazie alle nostre tecnologie innovative. Per granito, agglomerati di quarzo e pietre dure.

#### GRINDING

Our wheels more suitable for moderate productions. They provide the best compromise of durability and cost. For granite, quartz and hard stones

### BIPOWER

#### LA MOLA RETTIFICATRICE CHE NON SI DEFORMA

La mola indeformabile per una perfetta rettifica del profilo. Grazie a questa mola le successive mole lucidanti potranno lavorare in condizioni ottimali per una maggiore durata ed il massimo grado di lucentezza finale. Per granito, agglomerati di quarzo, marmi e pietre.

#### THE RECTIFICATION WHEEL THAT NEVER LOSES ITS SHAPE

The non-deformable wheel for the perfect profile rectification. Thanks to its work the following polishing wheels will work in ideal conditions, have a longer lifespan and grant the perfect final polishing. For granite, quartz, marble and hard stones.

## POS. 4-5-6



### LONG LIFE

#### L'INNOVATIVO SISTEMA DI LUCIDATURA

Costruite con pregiatissimo diamante stampato su corpo elastico, garantiscono una serie di vantaggi: lunghissima durata, tempi di lavorazione dimezzati, totale assenza di righe, eccezionale grado di lucentezza con risultati insuperabili su marmi, graniti ed agglomerati di quarzo. Per granito, agglomerati di quarzo, marmi e pietre.

#### THE INNOVATIVE POLISHING SYSTEM

Made with precious diamonds molded onto an elastic rubber core, these tools offer multiply advantages: long life span, reduced process times, absence of lines, outstanding polish and deep gloss on marble, granites and quartz. For granite, quartz, marble and other stones.

## POS. 1-2-3



### ELETTROLITICA / ELECTROPLATED

#### SGROSSATURA MARMO

Le mole elettrolitiche, costruite secondo i più moderni ed avanzati sistemi di elettrodeposizione, consentono un ottimo potere di asportazione ed una lunga durata. Per marmi e pietre tenere.

#### GRINDING - MARBLE

Our electroplated wheels are made following the modern and innovative electroplated process which grants a very good grinding power and a long lifespan. For marble and soft stones.

### BIPOWER

#### LA MOLA RETTIFICATRICE CHE NON SI DEFORMA

La mola indeformabile per una perfetta rettifica del profilo. Grazie a questa mola le successive mole lucidanti potranno lavorare in condizioni ottimali per una maggiore durata ed il massimo grado di lucentezza finale. Per granito, agglomerati di quarzo, marmi e pietre.

#### THE RECTIFICATION WHEEL THAT NEVER LOSES ITS SHAPE

The non-deformable wheel for the perfect profile rectification. Thanks to its work the following polishing wheels will work in ideal conditions, have a longer lifespan and grant the perfect final polishing. For granite, quartz, marble and hard stones.

## POS. 4-5-6



### LONG LIFE

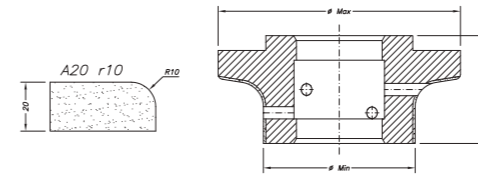
#### L'INNOVATIVO SISTEMA DI LUCIDATURA

Costruite con pregiatissimo diamante stampato su corpo elastico, garantiscono una serie di vantaggi: lunghissima durata, tempi di lavorazione dimezzati, totale assenza di righe, eccezionale grado di lucentezza con risultati insuperabili su marmi, graniti ed agglomerati di quarzo. Per granito, agglomerati di quarzo, marmi e pietre.

#### THE INNOVATIVE POLISHING SYSTEM

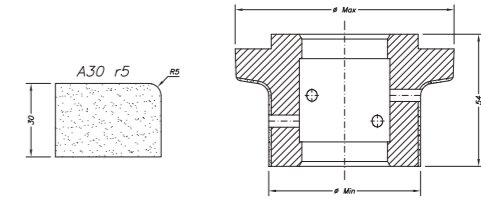
Made with precious diamonds molded onto an elastic rubber core, these tools offer multiply advantages: long life span, reduced process times, absence of lines, outstanding polish and deep gloss on marble, granites and quartz. For granite, quartz, marble and other stones.

# POS. 5F



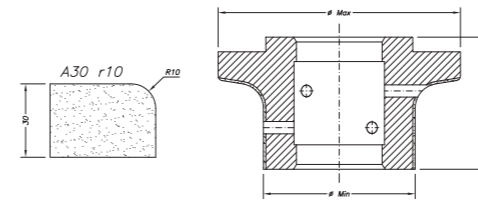
A20 r10

COD.	TIPO MOLA WHEEL TYPE	Ø MIN	Ø MAX	POS.	MATERIALE MATERIAL
SC72002	Frangistone	62	71	00	○ ○
SCR72002	Razorstone	62	77	0	○ ○
SC61002	Zenith	62	100	1	○ ○ ○
SC62002	Zenith	62	100	2	○ ○ ○
SC63002	Bi Power	62	100	3	○ ○ ○ ○
SC64002	Long Life	62	100	4	○ ○ ○ ○
SC65002	Long Life	62	100	5	○ ○ ○ ○
SC66002	Long Life	62	100	6	○ ○ ○ ○
SC67002	Elettrolitica / Electroplated	62	100	1	○
SC68002	Elettrolitica / Electroplated	62	100	2	○



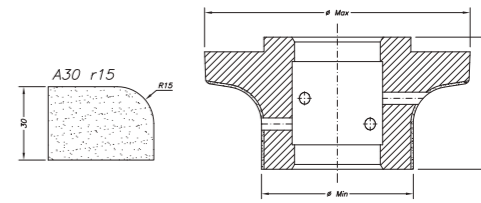
A30 r5

COD.	TIPO MOLA WHEEL TYPE	Ø MIN	Ø MAX	POS.	MATERIALE MATERIAL
SCR72005	Razorstone	62	70	0	○ ○
SC61005	Zenith	62	90	1	○ ○ ○
SC62005	Zenith	62	90	2	○ ○ ○
SC63005	Bi Power	62	90	3	○ ○ ○ ○
SC64005	Long Life	62	90	4	○ ○ ○ ○
SC65005	Long Life	62	90	5	○ ○ ○ ○
SC66005	Long Life	62	90	6	○ ○ ○ ○
SC75001	Perfector	62	62	-	○ ○ ○ ○
SC67005	Elettrolitica / Electroplated	62	90	1	○
SC68005	Elettrolitica / Electroplated	62	90	2	○



A30 r10

COD.	TIPO MOLA WHEEL TYPE	Ø MIN	Ø MAX	POS.	MATERIALE MATERIAL
SCR72008	Razorstone	62	82	0	○ ○
SC61008	Zenith	62	100	1	○ ○ ○
SC62008	Zenith	62	100	2	○ ○ ○
SC63008	Bi Power	62	100	3	○ ○ ○ ○
SC64008	Long Life	62	100	4	○ ○ ○ ○
SC65008	Long Life	62	100	5	○ ○ ○ ○
SC66008	Long Life	62	100	6	○ ○ ○ ○
SC75001	Perfector	62	62	-	○ ○ ○ ○
SC67008	Elettrolitica / Electroplated	62	100	1	○
SC68008	Elettrolitica / Electroplated	62	100	2	○



A30 r15

COD.	TIPO MOLA WHEEL TYPE	Ø MIN	Ø MAX	POS.	MATERIALE MATERIAL
SC72009	Frangistone	62	91	00	○ ○
SCR72009	Razorstone	62	93	0	○ ○
SC61009	Zenith	62	109	1	○ ○ ○
SC62009	Zenith	62	109	2	○ ○ ○
SC63009	Bi Power	62	109	3	○ ○ ○ ○
SC64009	Long Life	62	109	4	○ ○ ○ ○
SC65009	Long Life	62	109	5	○ ○ ○ ○
SC66009	Long Life	62	109	6	○ ○ ○ ○
SC67009	Elettrolitica / Electroplated	62	109	1	○
SC68009	Elettrolitica / Electroplated	62	109	2	○

## PERFECTOR

### LA RISPOSTA AL PROBLEMA DELLE RIGHE SUI BORDI DIRITTI

La mola PERFECTOR WHEEL è appositamente concepita per eliminare tutte le righe presenti sui bordi diritti lucidati con mole sagomate, grazie ad una particolare struttura ed un perfetto equilibrio tra durezza e flessibilità.

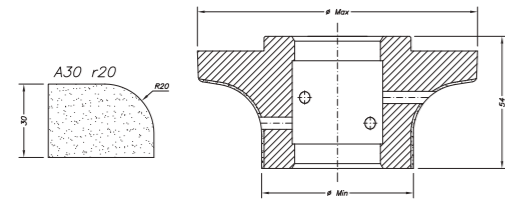
### THE ANSWER TO THE PROBLEM OF LINES ON POLISHED STRAIGHT EDGES

The PERFECTOR WHEEL is made to eliminate all lines on polished straight edges, thanks to its peculiar structure and the perfect equilibrium between hardness and flexibility.

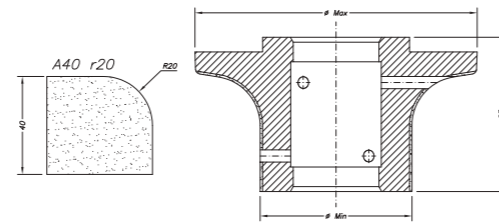
LEGENDA MATERIALE  
LEGEND MATERIAL:



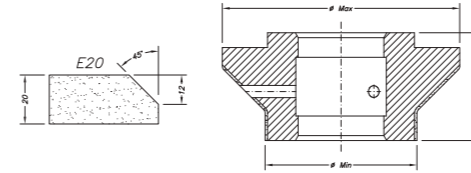




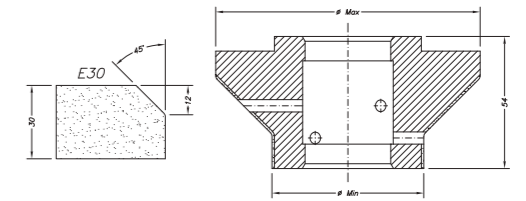
A30 r20



A40 r20



E20



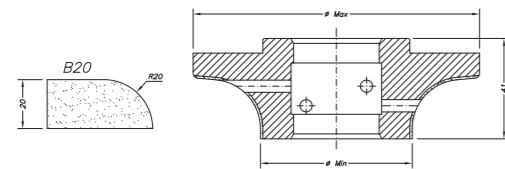
E30

COD.	TIPO MOLA WHEEL TYPE	Ø MIN	Ø MAX	POS.	MATERIALE MATERIAL
SC72010	Frangistone	62	85	00	○ ○
SCR72010	Razorstone	62	91	0	○ ○
SC61010	Zenith	62	115	1	○ ○ ○
SC62010	Zenith	62	115	2	○ ○ ○
SC63010	Bi Power	62	115	3	○ ○ ○ ○
SC64010	Long Life	62	115	4	○ ○ ○ ○
SC65010	Long Life	62	115	5	○ ○ ○ ○
SC66010	Long Life	62	115	6	○ ○ ○ ○
SC67010	Elettrolitica / Electroplated	62	115	1	○
SC68010	Elettrolitica / Electroplated	62	115	2	○

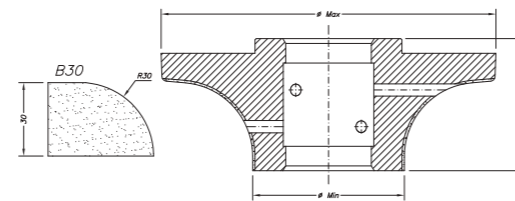
COD.	TIPO MOLA WHEEL TYPE	Ø MIN	Ø MAX	POS.	MATERIALE MATERIAL
SC72021	Frangistone	62	85	00	○ ○
SCR72021	Razorstone	62	91	0	○ ○
SC61021	Zenith	62	115	1	○ ○ ○
SC62021	Zenith	62	115	2	○ ○ ○
SC63021	Bi Power	62	115	3	○ ○ ○ ○
SC64021	Long Life	62	115	4	○ ○ ○ ○
SC65021	Long Life	62	115	5	○ ○ ○ ○
SC66021	Long Life	62	115	6	○ ○ ○ ○
SC67021	Elettrolitica / Electroplated	62	115	1	○
SC68021	Elettrolitica / Electroplated	62	115	2	○

COD.	TIPO MOLA WHEEL TYPE	Ø MIN	Ø MAX	POS.	MATERIALE MATERIAL
SC72045	Frangistone	62	80	00	○ ○
SCR72045	Razorstone	62	89	0	○ ○
SC61045	Zenith	62	97	1	○ ○ ○
SC62045	Zenith	62	97	2	○ ○ ○
SC63045	Bi Power	62	97	3	○ ○ ○ ○
SC64045	Long Life	62	97	4	○ ○ ○ ○
SC65045	Long Life	62	97	5	○ ○ ○ ○
SC66045	Long Life	62	97	6	○ ○ ○ ○
SC67045	Elettrolitica / Electroplated	62	97	1	○
SC68045	Elettrolitica / Electroplated	62	97	2	○

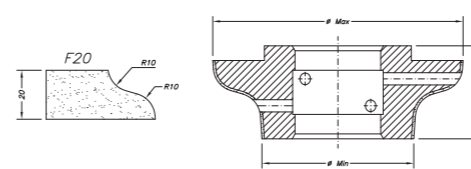
COD.	TIPO MOLA WHEEL TYPE	Ø MIN	Ø MAX	POS.	MATERIALE MATERIAL
SC72D062	Frangistone	62	96	00	○ ○
SCR72D062	Razorstone	62	91	0	○ ○
SC61D062	Zenith	62	93	1	○ ○ ○
SC62D062	Zenith	62	93	2	○ ○ ○
SC63D062	Bi Power	62	93	3	○ ○ ○ ○
SC64D062	Long Life	62	93	4	○ ○ ○ ○
SC65D062	Long Life	62	93	5	○ ○ ○ ○
SC66D062	Long Life	62	93	6	○ ○ ○ ○
SC67D062	Elettrolitica / Electroplated	62	93	1	○
SC68D062	Elettrolitica / Electroplated	62	93	2	○



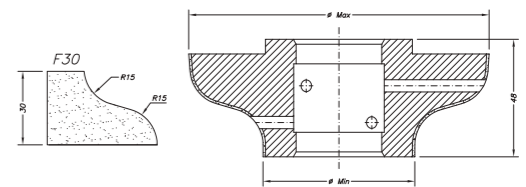
B20



B30



F20



F30

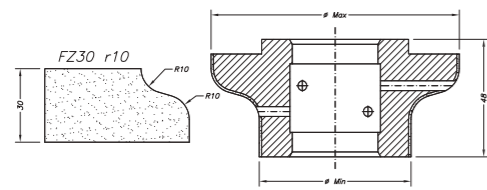
COD.	TIPO MOLA WHEEL TYPE	Ø MIN	Ø MAX	POS.	MATERIALE MATERIAL
SC72026	Frangistone	62	85	00	○ ○
SCR72026	Razorstone	62	91	0	○ ○
SC61026	Zenith	62	117	1	○ ○ ○
SC62026	Zenith	62	117	2	○ ○ ○
SC63026	Bi Power	62	117	3	○ ○ ○ ○
SC64026	Long Life	62	117	4	○ ○ ○ ○
SC65026	Long Life	62	117	5	○ ○ ○ ○
SC66026	Long Life	62	117	6	○ ○ ○ ○
SC67026	Elettrolitica / Electroplated	62	117	1	○
SC68026	Elettrolitica / Electroplated	62	117	2	○

COD.	TIPO MOLA WHEEL TYPE	Ø MIN	Ø MAX	POS.	MATERIALE MATERIAL
SC72027	Frangistone	62	98	00	○ ○
SCR72027	Razorstone	62	108	0	○ ○
SC61027	Zenith	62	137	1	○ ○ ○
SC62027	Zenith	62	137	2	○ ○ ○
SC63027	Bi Power	62	137	3	○ ○ ○ ○
SC64027	Long Life	62	137	4	○ ○ ○ ○
SC65027	Long Life	62	137	5	○ ○ ○ ○
SC66027	Long Life	62	137	6	○ ○ ○ ○
SC67027	Elettrolitica / Electroplated	62	137	1	○
SC68027	Elettrolitica / Electroplated	62	137	2	○

COD.	TIPO MOLA WHEEL TYPE	Ø MIN	Ø MAX	POS.	MATERIALE MATERIAL
SC72049	Frangistone	62	100	00	○ ○
SCR72049	Razorstone	62	108	0	○ ○
SC61049	Zenith	62	102	1	○ ○ ○
SC62049	Zenith	62	102	2	○ ○ ○
SC63049	Bi Power	62	102	3	○ ○ ○ ○
SC64049	Long Life	62	102	4	○ ○ ○ ○
SC65049	Long Life	62	102	5	○ ○ ○ ○
SC66049	Long Life	62	102	6	○ ○ ○ ○
SC67049	Elettrolitica / Electroplated	62	102	1	○
SC68049	Elettrolitica / Electroplated	62	102	2	○

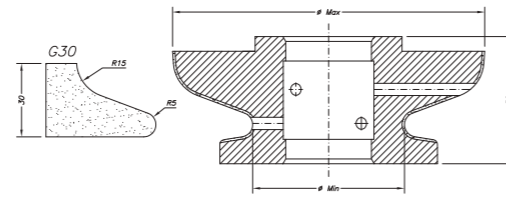
COD.	TIPO MOLA WHEEL TYPE	Ø MIN	Ø MAX	POS.	MATERIALE MATERIAL
SC72050	Frangistone	62	121	00	○ ○
SCR72050	Razorstone	62	124	0	○ ○
SC61050	Zenith	62	123	1	○ ○ ○
SC62050	Zenith	62	123	2	○ ○ ○
SC63050	Bi Power	62	123	3	○ ○ ○ ○
SC64050	Long Life	62	123	4	○ ○ ○ ○
SC65050	Long Life	62	123	5	○ ○ ○ ○
SC66050	Long Life	62	123	6	○ ○ ○ ○
SC67050	Elettrolitica / Electroplated	62	123	1	○
SC68050	Elettrolitica / Electroplated	62	123	2	○

MOLE SAGOMATE LINEA 60 / LINE 60 PROFILE WHEELS



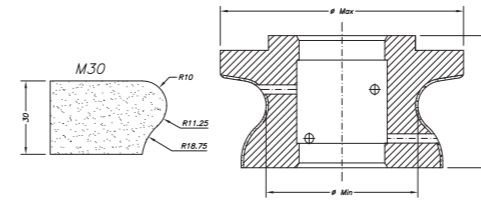
**FZ30 r10**

COD.	TIPO MOLA WHEEL TYPE	Ø MIN	Ø MAX	POS.	MATERIALE MATERIAL
SC72074	Frangistone	62	103	00	○ ○
SCR72074	Razorstone	62	101	0	○ ○
SC61074	Zenith	62	101	1	○ ○ ○
SC62074	Zenith	62	101	2	○ ○ ○
SC63074	Bi Power	62	101	3	○ ○ ○ ○
SC64074	Long Life	62	101	4	○ ○ ○ ○
SC65074	Long Life	62	101	5	○ ○ ○ ○
SC66074	Long Life	62	101	6	○ ○ ○ ○
SC67074	Elettrolitica / Electroplated	62	101	1	○
SC68074	Elettrolitica / Electroplated	62	101	2	○



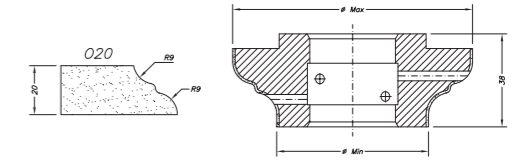
**G30**

COD.	TIPO MOLA WHEEL TYPE	Ø MIN	Ø MAX	POS.	MATERIALE MATERIAL
SC72054	Frangistone	62	128	00	○ ○
SCR72054	Razorstone	62	128	0	○ ○
SC61054	Zenith	62	128	1	○ ○ ○
SC62054	Zenith	62	128	2	○ ○ ○
SC63054	Bi Power	62	128	3	○ ○ ○ ○
SC64054	Long Life	62	128	4	○ ○ ○ ○
SC65054	Long Life	62	128	5	○ ○ ○ ○
SC66054	Long Life	62	128	6	○ ○ ○ ○
SC67054	Elettrolitica / Electroplated	62	128	1	○
SC68054	Elettrolitica / Electroplated	62	128	2	○



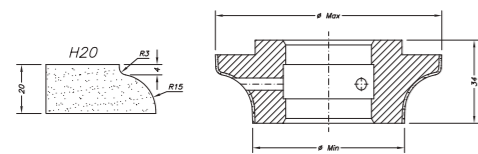
**M30**

COD.	TIPO MOLA WHEEL TYPE	Ø MIN	Ø MAX	POS.	MATERIALE MATERIAL
SC72068	Frangistone	62	80	00	○ ○
SCR72068	Razorstone	62	83	0	○ ○
SC61068	Zenith	62	99	1	○ ○ ○
SC62068	Zenith	62	99	2	○ ○ ○
SC63068	Bi Power	62	99	3	○ ○ ○ ○
SC64068	Long Life	62	99	4	○ ○ ○ ○
SC65068	Long Life	62	99	5	○ ○ ○ ○
SC66068	Long Life	62	99	6	○ ○ ○ ○
SC67068	Elettrolitica / Electroplated	62	99	1	○
SC68068	Elettrolitica / Electroplated	62	99	2	○



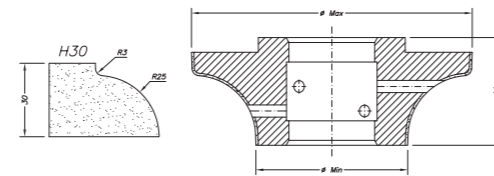
**O20**

COD.	TIPO MOLA WHEEL TYPE	Ø MIN	Ø MAX	POS.	MATERIALE MATERIAL
SC72070	Frangistone	62	96	00	○ ○
SCR72070	Razorstone	62	98	0	○ ○
SC61070	Zenith	62	98	1	○ ○ ○
SC62070	Zenith	62	98	2	○ ○ ○
SC63070	Bi Power	62	98	3	○ ○ ○ ○
SC64070	Long Life	62	98	4	○ ○ ○ ○
SC65070	Long Life	62	98	5	○ ○ ○ ○
SC66070	Long Life	62	98	6	○ ○ ○ ○
SC67070	Elettrolitica / Electroplated	62	98	1	○
SC68070	Elettrolitica / Electroplated	62	98	2	○



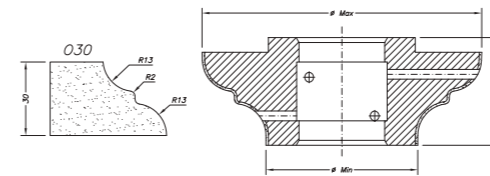
**H20**

COD.	TIPO MOLA WHEEL TYPE	Ø MIN	Ø MAX	POS.	MATERIALE MATERIAL
SC72056	Frangistone	62	90	00	○ ○
SCR72056	Razorstone	62	98	0	○ ○
SC61056	Zenith	62	93	1	○ ○ ○
SC62056	Zenith	62	93	2	○ ○ ○
SC63056	Bi Power	62	93	3	○ ○ ○ ○
SC64056	Long Life	62	93	4	○ ○ ○ ○
SC65056	Long Life	62	93	5	○ ○ ○ ○
SC66056	Long Life	62	93	6	○ ○ ○ ○
SC67056	Elettrolitica / Electroplated	62	93	1	○
SC68056	Elettrolitica / Electroplated	62	93	2	○



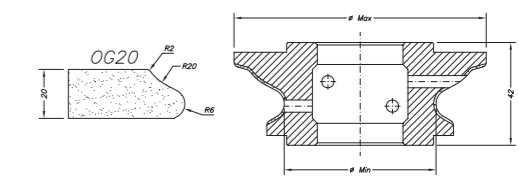
**H30**

COD.	TIPO MOLA WHEEL TYPE	Ø MIN	Ø MAX	POS.	MATERIALE MATERIAL
SC72057	Frangistone	62	111	00	○ ○
SCR72057	Razorstone	62	108	0	○ ○
SC61057	Zenith	62	115	1	○ ○ ○
SC62057	Zenith	62	115	2	○ ○ ○
SC63057	Bi Power	62	115	3	○ ○ ○ ○
SC64057	Long Life	62	115	4	○ ○ ○ ○
SC65057	Long Life	62	115	5	○ ○ ○ ○
SC66057	Long Life	62	115	6	○ ○ ○ ○
SC67057	Elettrolitica / Electroplated	62	115	1	○
SC68057	Elettrolitica / Electroplated	62	115	2	○



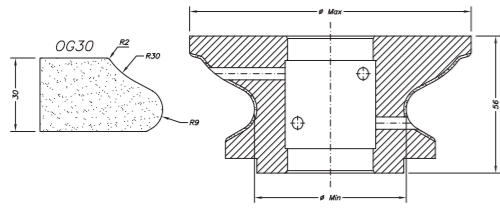
**O30**

COD.	TIPO MOLA WHEEL TYPE	Ø MIN	Ø MAX	POS.	MATERIALE MATERIAL
SC72071	Frangistone	62	111	00	○ ○
SCR72071	Razorstone	62	115	0	○ ○
SC61071	Zenith	62	115	1	○ ○ ○
SC62071	Zenith	62	115	2	○ ○ ○
SC63071	Bi Power	62	115	3	○ ○ ○ ○
SC64071	Long Life	62	115	4	○ ○ ○ ○
SC65071	Long Life	62	115	5	○ ○ ○ ○
SC66071	Long Life	62	115	6	○ ○ ○ ○
SC67071	Elettrolitica / Electroplated	62	115	1	○
SC68071	Elettrolitica / Electroplated	62	115	2	○



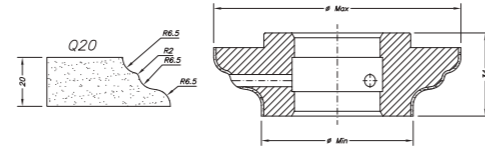
**OG20**

COD.	TIPO MOLA WHEEL TYPE	Ø MIN	Ø MAX	POS.	MATERIALE MATERIAL
SC72153	Frangistone	62	87	00	○ ○
SCR72153	Razorstone	62	95	0	○ ○
SC61153	Zenith	62	100	1	○ ○ ○
SC62153	Zenith	62	100	2	○ ○ ○
SC63153	Bi Power	62	100	3	○ ○ ○ ○
SC64153	Long Life	62	100	4	○ ○ ○ ○
SC65153	Long Life	62	100	5	○ ○ ○ ○
SC66153	Long Life	62	100	6	○ ○ ○ ○
SC67153	Elettrolitica / Electroplated	62	100	1	○
SC68153	Elettrolitica / Electroplated	62	100	2	○



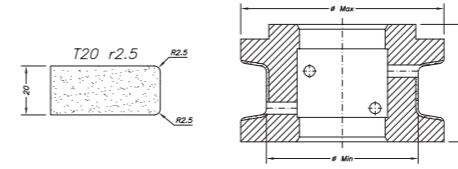
**OG30**

COD.	TIPO MOLA WHEEL TYPE	Ø MIN	Ø MAX	POS.	MATERIALE MATERIAL
SC72154	Frangistone	62	100	00	○ ○
SCR72154	Razorstone	62	108	0	○ ○
SC61154	Zenith	62	115	1	○ ○ ○
SC62154	Zenith	62	115	2	○ ○ ○
SC63154	Bi Power	62	115	3	○ ○ ○ ○
SC64154	Long Life	62	115	4	○ ○ ○ ○
SC65154	Long Life	62	115	5	○ ○ ○ ○
SC66154	Long Life	62	115	6	○ ○ ○ ○
SC67154	Elettrolitica / Electroplated	62	115	1	○
SC68154	Elettrolitica / Electroplated	62	115	2	○



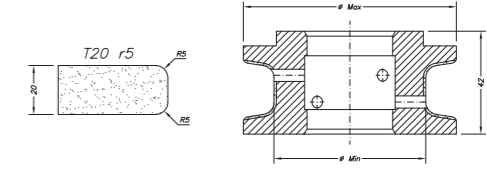
**Q20**

COD.	TIPO MOLA WHEEL TYPE	Ø MIN	Ø MAX	POS.	MATERIALE MATERIAL
SC72077	Frangistone	62	100	00	○ ○
SCR72077	Razorstone	62	101	0	○ ○
SC61077	Zenith	62	101	1	○ ○ ○
SC62077	Zenith	62	101	2	○ ○ ○
SC63077	Bi Power	62	101	3	○ ○ ○ ○
SC64077	Long Life	62	101	4	○ ○ ○ ○
SC65077	Long Life	62	101	5	○ ○ ○ ○
SC66077	Long Life	62	101	6	○ ○ ○ ○
SC67077	Elettrolitica / Electroplated	62	101	1	○
SC68077	Elettrolitica / Electroplated	62	101	2	○



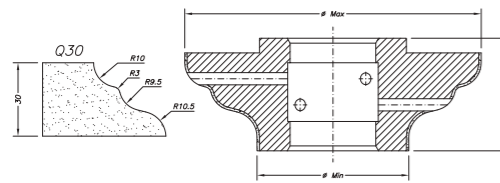
**T20 r2,5**

COD.	TIPO MOLA WHEEL TYPE	Ø MIN	Ø MAX	POS.	MATERIALE MATERIAL
SCR72114	Razorstone	62	70	0	○ ○
SC61114	Zenith	62	83	1	○ ○ ○
SC62114	Zenith	62	83	2	○ ○ ○
SC63114	Bi Power	62	83	3	○ ○ ○ ○
SC64114	Long Life	62	83	4	○ ○ ○ ○
SC65114	Long Life	62	83	5	○ ○ ○ ○
SC66114	Long Life	62	83	6	○ ○ ○ ○
SC75001	Perfector	62	62	-	○ ○ ○ ○
SC67114	Elettrolitica / Electroplated	62	83	1	○
SC68114	Elettrolitica / Electroplated	62	83	2	○



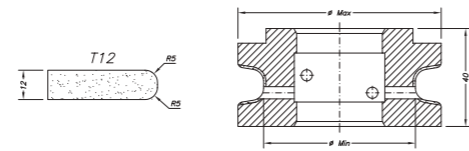
**T20 r5**

COD.	TIPO MOLA WHEEL TYPE	Ø MIN	Ø MAX	POS.	MATERIALE MATERIAL
SCR72080	Razorstone	62	73	0	○ ○
SC61080	Zenith	62	87	1	○ ○ ○
SC62080	Zenith	62	87	2	○ ○ ○
SC63080	Bi Power	62	87	3	○ ○ ○ ○
SC64080	Long Life	62	87	4	○ ○ ○ ○
SC65080	Long Life	62	87	5	○ ○ ○ ○
SC66080	Long Life	62	87	6	○ ○ ○ ○
SC75001	Perfector	62	62	-	○ ○ ○ ○
SC67080	Elettrolitica / Electroplated	62	87	1	○
SC68080	Elettrolitica / Electroplated	62	87	2	○



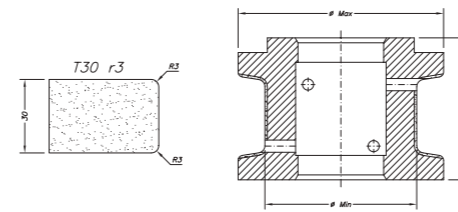
**Q30**

COD.	TIPO MOLA WHEEL TYPE	Ø MIN	Ø MAX	POS.	MATERIALE MATERIAL
SC72078	Frangistone	62	118	00	○ ○
SCR72078	Razorstone	62	121	0	○ ○
SC61078	Zenith	62	121	1	○ ○ ○
SC62078	Zenith	62	121	2	○ ○ ○
SC63078	Bi Power	62	121	3	○ ○ ○ ○
SC64078	Long Life	62	121	4	○ ○ ○ ○
SC65078	Long Life	62	121	5	○ ○ ○ ○
SC66078	Long Life	62	121	6	○ ○ ○ ○
SC67078	Elettrolitica / Electroplated	62	121	1	○
SC68078	Elettrolitica / Electroplated	62	121	2	○



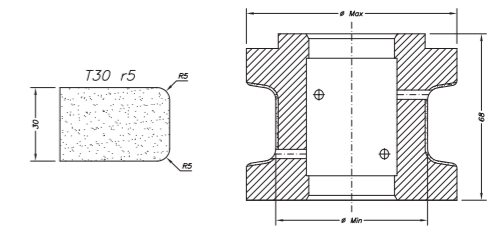
**T12**

COD.	TIPO MOLA WHEEL TYPE	Ø MIN	Ø MAX	POS.	MATERIALE MATERIAL
SCR72243	Razorstone	62	72	0	○ ○
SC61243	Zenith	62	75	1	○ ○ ○
SC62243	Zenith	62	75	2	○ ○ ○
SC63243	Bi Power	62	75	3	○ ○ ○ ○
SC64243	Long Life	62	75	4	○ ○ ○ ○
SC65243	Long Life	62	75	5	○ ○ ○ ○
SC66243	Long Life	62	75	6	○ ○ ○ ○
SC67243	Elettrolitica / Electroplated	62	75	1	○
SC68243	Elettrolitica / Electroplated	62	75	2	○



**T30 r3**

COD.	TIPO MOLA WHEEL TYPE	Ø MIN	Ø MAX	POS.	MATERIALE MATERIAL
SCR72115	Razorstone	62	67	0	○ ○
SC61115	Zenith	62	84	1	○ ○ ○
SC62115	Zenith	62	84	2	○ ○ ○
SC63115	Bi Power	62	84	3	○ ○ ○ ○
SC64115	Long Life	62	84	4	○ ○ ○ ○
SC65115	Long Life	62	84	5	○ ○ ○ ○
SC66115	Long Life	62	84	6	○ ○ ○ ○
SC75001	Perfector	62	62	-	○ ○ ○ ○
SC67115	Elettrolitica / Electroplated	62	84	1	○
SC68115	Elettrolitica / Electroplated	62	84	2	○

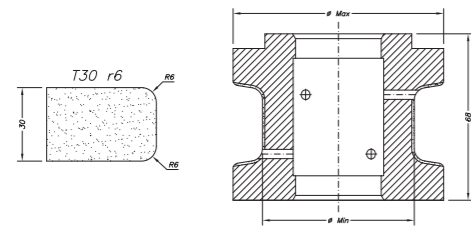


**T30 r5**

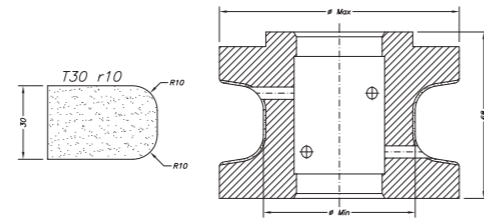
COD.	TIPO MOLA WHEEL TYPE	Ø MIN	Ø MAX	POS.	MATERIALE MATERIAL
SCR72082	Razorstone	62	74	0	○ ○
SC61082	Zenith	62	86	1	○ ○ ○
SC62082	Zenith	62	86	2	○ ○ ○
SC63082	Bi Power	62	86	3	○ ○ ○ ○
SC64082	Long Life	62	86	4	○ ○ ○ ○
SC65082	Long Life	62	86	5	○ ○ ○ ○
SC66082	Long Life	62	86	6	○ ○ ○ ○
SC75001	Perfector	62	62	-	○ ○ ○ ○
SC67082	Elettrolitica / Electroplated	62	86	1	○
SC68082	Elettrolitica / Electroplated	62	86	2	○



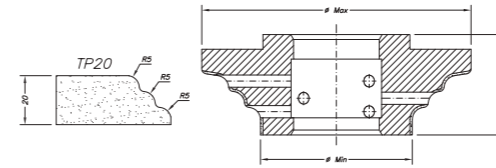
MOLE SAGOMATE LINEA 60 / LINE 60 PROFILE WHEELS



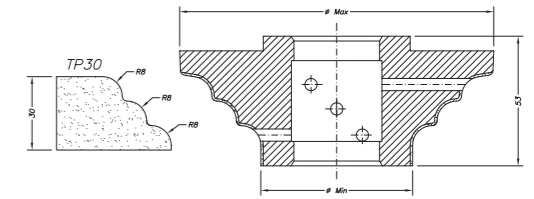
T30 r6



T30 r10



TP20



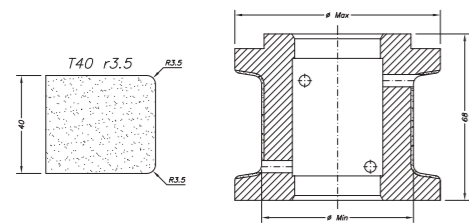
TP30

COD.	TIPO MOLA WHEEL TYPE	Ø MIN	Ø MAX	POS.	MATERIALE MATERIAL
SCR72267	Razorstone	62	67	0	○ ○
SC61267	Zenith	62	84	1	○ ○ ○
SC62267	Zenith	62	84	2	○ ○ ○
SC63267	Bi Power	62	84	3	○ ○ ○ ○
SC64267	Long Life	62	84	4	○ ○ ○ ○
SC65267	Long Life	62	84	5	○ ○ ○ ○
SC66267	Long Life	62	84	6	○ ○ ○ ○
SC75001	Perfector	62	62	-	○ ○ ○ ○
SC67267	Elettrolitica / Electroplated	62	86	1	○
SC68267	Elettrolitica / Electroplated	62	86	2	○

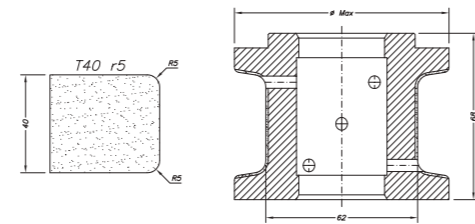
COD.	TIPO MOLA WHEEL TYPE	Ø MIN	Ø MAX	POS.	MATERIALE MATERIAL
SCR72081	Razorstone	62	100	0	○ ○
SC61081	Zenith	62	98	1	○ ○ ○
SC62081	Zenith	62	98	2	○ ○ ○
SC63081	Bi Power	62	98	3	○ ○ ○ ○
SC64081	Long Life	62	98	4	○ ○ ○ ○
SC65081	Long Life	62	98	5	○ ○ ○ ○
SC66081	Long Life	62	98	6	○ ○ ○ ○
SC75001	Perfector	62	62	-	○ ○ ○ ○
SC67081	Elettrolitica / Electroplated	62	98	1	○
SC68081	Elettrolitica / Electroplated	62	98	2	○

COD.	TIPO MOLA WHEEL TYPE	Ø MIN	Ø MAX	POS.	MATERIALE MATERIAL
SC72029	Frangistone	62	84	00	○ ○
SCR72029	Razorstone	62	99	0	○ ○
SC61029	Zenith	62	110	1	○ ○ ○
SC62029	Zenith	62	110	2	○ ○ ○
SC63029	Bi Power	62	110	3	○ ○ ○ ○
SC64029	Long Life	62	110	4	○ ○ ○ ○
SC65029	Long Life	62	110	5	○ ○ ○ ○
SC66029	Long Life	62	110	6	○ ○ ○ ○
SC67029	Elettrolitica / Electroplated	62	110	1	○
SC68029	Elettrolitica / Electroplated	62	110	2	○

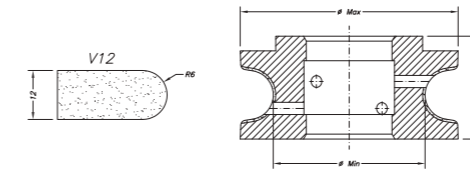
COD.	TIPO MOLA WHEEL TYPE	Ø MIN	Ø MAX	POS.	MATERIALE MATERIAL
SC72030	Frangistone	62	100	00	○ ○
SCR72030	Razorstone	62	103	0	○ ○
SC61030	Zenith	62	128	1	○ ○ ○
SC62030	Zenith	62	128	2	○ ○ ○
SC63030	Bi Power	62	128	3	○ ○ ○ ○
SC64030	Long Life	62	128	4	○ ○ ○ ○
SC65030	Long Life	62	128	5	○ ○ ○ ○
SC66030	Long Life	62	128	6	○ ○ ○ ○
SC67030	Elettrolitica / Electroplated	62	128	1	○
SC68030	Elettrolitica / Electroplated	62	128	2	○



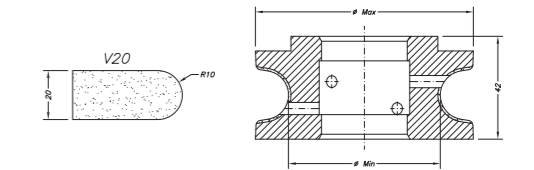
T40 r3,5



T40 r5



V12



V20

COD.	TIPO MOLA WHEEL TYPE	Ø MIN	Ø MAX	POS.	MATERIALE MATERIAL
SCR72117	Razorstone	62	82	0	○ ○
SC61117	Zenith	62	85	1	○ ○ ○
SC62117	Zenith	62	85	2	○ ○ ○
SC63117	Bi Power	62	85	3	○ ○ ○ ○
SC64117	Long Life	62	85	4	○ ○ ○ ○
SC65117	Long Life	62	85	5	○ ○ ○ ○
SC66117	Long Life	62	85	6	○ ○ ○ ○
SC75002	Perfector	62	62	-	○ ○ ○ ○
SC67117	Elettrolitica / Electroplated	62	85	1	○
SC68117	Elettrolitica / Electroplated	62	85	2	○

COD.	TIPO MOLA WHEEL TYPE	Ø MIN	Ø MAX	POS.	MATERIALE MATERIAL
SCR72084	Razorstone	62	100	0	○ ○
SC61084	Zenith	62	88	1	○ ○ ○
SC62084	Zenith	62	88	2	○ ○ ○
SC63084	Bi Power	62	88	3	○ ○ ○ ○
SC64084	Long Life	62	88	4	○ ○ ○ ○
SC65084	Long Life	62	88	5	○ ○ ○ ○
SC66084	Long Life	62	88	6	○ ○ ○ ○
SC75002	Perfector	62	62	-	○ ○ ○ ○
SC67084	Elettrolitica / Electroplated	62	88	1	○
SC68084	Elettrolitica / Electroplated	62	88	2	○

COD.	TIPO MOLA WHEEL TYPE	Ø MIN	Ø MAX	POS.	MATERIALE MATERIAL
SC72087	Frangistone	62	71	00	○ ○
SCR72087	Razorstone	62	82	0	○ ○
SC61265	Zenith	62	85	1	○ ○ ○
SC62265	Zenith	62	85	2	○ ○ ○
SC63265	Bi Power	62	85	3	○ ○ ○ ○
SC64265	Long Life	62	85	4	○ ○ ○ ○
SC65265	Long Life	62	85	5	○ ○ ○ ○
SC66265	Long Life	62	85	6	○ ○ ○ ○
SC67087	Elettrolitica / Electroplated	62	98	1	○
SC68087	Elettrolitica / Electroplated	62	98	2	○

COD.	TIPO MOLA WHEEL TYPE	Ø MIN	Ø MAX	POS.	MATERIALE MATERIAL
SC72087	Frangistone	62	71	00	○ ○
SCR72087	Razorstone	62	82	0	○ ○
SC61087	Zenith	62	98	1	○ ○ ○
SC62087	Zenith	62	98	2	○ ○ ○
SC63087	Bi Power	62	98	3	○ ○ ○ ○
SC64087	Long Life	62	98	4	○ ○ ○ ○
SC65087	Long Life	62	98	5	○ ○ ○ ○
SC66087	Long Life	62	98	6	○ ○ ○ ○
SC67087	Elettrolitica / Electroplated	62	98	1	○
SC68087	Elettrolitica / Electroplated	62	98	2	○

LEGENDA MATERIALE  
LEGEND MATERIAL:

○ Granito  
Granite

○ Ceramica  
Ceramic

○ Quarzo  
Quartz

○ Marmo  
Marble

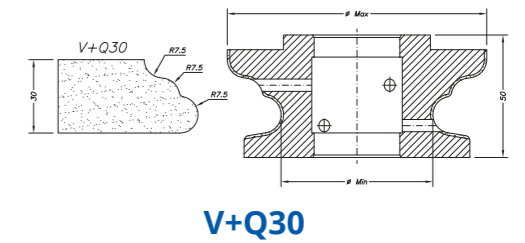
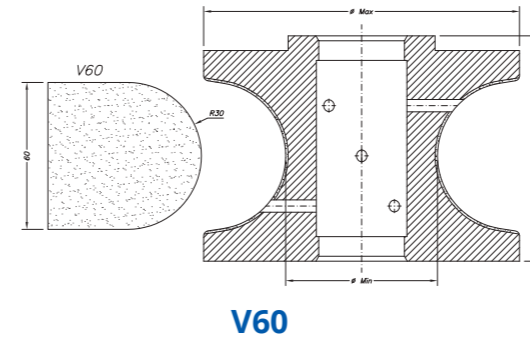
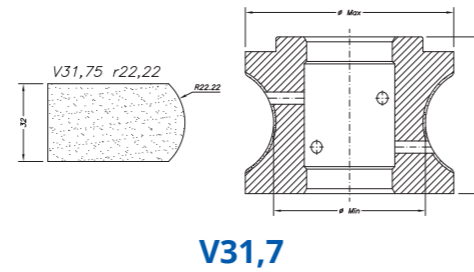
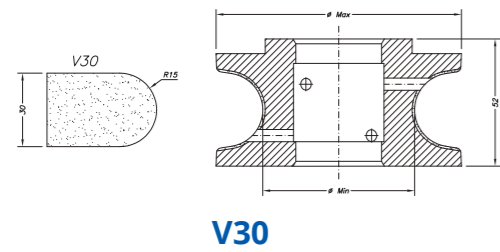
LEGENDA MATERIALE  
LEGEND MATERIAL:

○ Granito  
Granite

○ Ceramica  
Ceramic

○ Quarzo  
Quartz

○ Marmo  
Marble

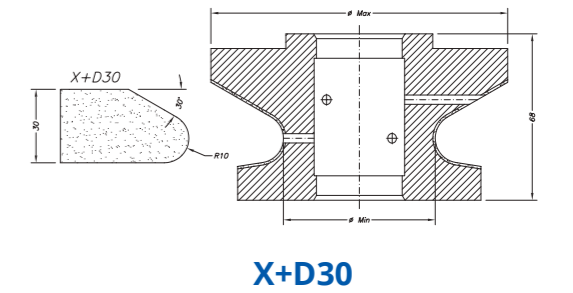
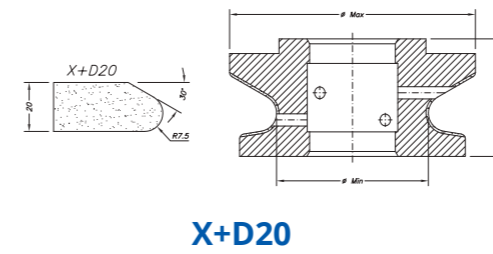
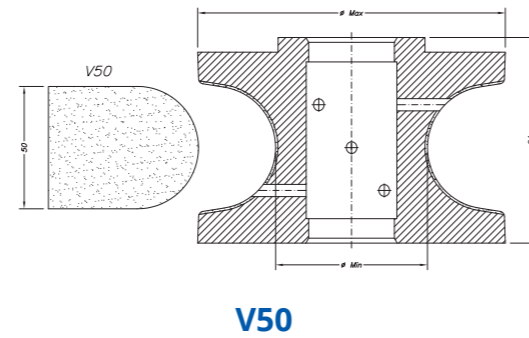
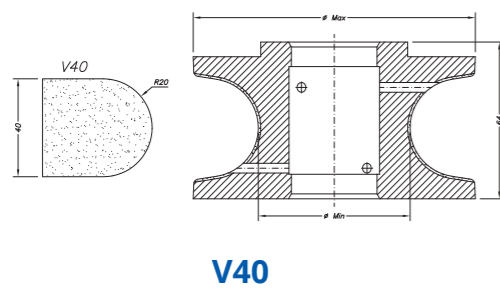


COD.	TIPO MOLA WHEEL TYPE	Ø MIN	Ø MAX	POS.	MATERIALE MATERIAL
SC72088	Frangistone	62	74	00	○ ○
SCR72088	Razorstone	62	91	0	○ ○
SC61088	Zenith	62	100	1	○ ○ ○
SC62088	Zenith	62	100	2	○ ○ ○
SC63088	Bi Power	62	100	3	○ ○ ○ ○
SC64088	Long Life	62	100	4	○ ○ ○ ○
SC65088	Long Life	62	100	5	○ ○ ○ ○
SC66088	Long Life	62	100	6	○ ○ ○ ○
SC67088	Elettrolitica / Electroplated	62	100	1	○
SC68088	Elettrolitica / Electroplated	62	100	2	○

COD.	TIPO MOLA WHEEL TYPE	Ø MIN	Ø MAX	POS.	MATERIALE MATERIAL
SC72089	Frangistone	62	74	00	○ ○
SCR72089	Razorstone	62	77	0	○ ○
SC61089	Zenith	62	85	1	○ ○ ○
SC62089	Zenith	62	85	2	○ ○ ○
SC63089	Bi Power	62	85	3	○ ○ ○ ○
SC64089	Long Life	62	85	4	○ ○ ○ ○
SC65089	Long Life	62	85	5	○ ○ ○ ○
SC66089	Long Life	62	85	6	○ ○ ○ ○
SC67089	Elettrolitica / Electroplated	62	85	1	○
SC68089	Elettrolitica / Electroplated	62	85	2	○

COD.	TIPO MOLA WHEEL TYPE	Ø MIN	Ø MAX	POS.	MATERIALE MATERIAL
SC72093	Frangistone	62	98	00	○ ○
SCR72093	Razorstone	62	123	0	○ ○
SC61093	Zenith	62	139	1	○ ○ ○
SC62093	Zenith	62	139	2	○ ○ ○
SC63093	Bi Power	62	139	3	○ ○ ○ ○
SC64093	Long Life	62	139	4	○ ○ ○ ○
SC65093	Long Life	62	139	5	○ ○ ○ ○
SC66093	Long Life	62	139	6	○ ○ ○ ○
SC67093	Elettrolitica / Electroplated	62	139	1	○
SC68093	Elettrolitica / Electroplated	62	139	2	○

COD.	TIPO MOLA WHEEL TYPE	Ø MIN	Ø MAX	POS.	MATERIALE MATERIAL
SC72103	Frangistone	62	103	00	○ ○
SCR72103	Razorstone	62	106	0	○ ○
SC61103	Zenith	62	106	1	○ ○ ○
SC62103	Zenith	62	106	2	○ ○ ○
SC63103	Bi Power	62	106	3	○ ○ ○ ○
SC64103	Long Life	62	106	4	○ ○ ○ ○
SC65103	Long Life	62	106	5	○ ○ ○ ○
SC66103	Long Life	62	106	6	○ ○ ○ ○
SC67103	Elettrolitica / Electroplated	62	106	1	○
SC68103	Elettrolitica / Electroplated	62	106	2	○

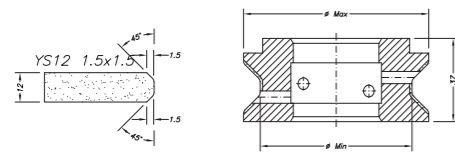


COD.	TIPO MOLA WHEEL TYPE	Ø MIN	Ø MAX	POS.	MATERIALE MATERIAL
SC72090	Frangistone	62	84	00	○ ○
SCR72090	Razorstone	62	98	0	○ ○
SC61090	Zenith	62	115	1	○ ○ ○
SC62090	Zenith	62	115	2	○ ○ ○
SC63090	Bi Power	62	115	3	○ ○ ○ ○
SC64090	Long Life	62	115	4	○ ○ ○ ○
SC65090	Long Life	62	115	5	○ ○ ○ ○
SC66090	Long Life	62	115	6	○ ○ ○ ○
SC67090	Elettrolitica / Electroplated	62	115	1	○
SC68090	Elettrolitica / Electroplated	62	115	2	○

COD.	TIPO MOLA WHEEL TYPE	Ø MIN	Ø MAX	POS.	MATERIALE MATERIAL
SC72092	Frangistone	62	87	00	○ ○
SCR72092	Razorstone	62	98	0	○ ○
SC61092	Zenith	62	124	1	○ ○ ○
SC62092	Zenith	62	124	2	○ ○ ○
SC63092	Bi Power	62	124	3	○ ○ ○ ○
SC64092	Long Life	62	124	4	○ ○ ○ ○
SC65092	Long Life	62	124	5	○ ○ ○ ○
SC66092	Long Life	62	124	6	○ ○ ○ ○
SC67092	Elettrolitica / Electroplated	62	124	1	○
SC68092	Elettrolitica / Electroplated	62	124	2	○

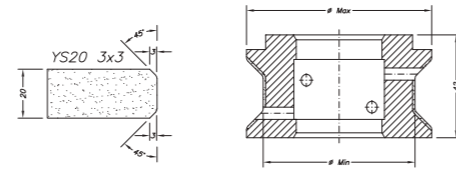
COD.	TIPO MOLA WHEEL TYPE	Ø MIN	Ø MAX	POS.	MATERIALE MATERIAL
SC72108	Frangistone	62	84	00	○ ○
SCR72108	Razorstone	62	95	0	○ ○
SC61108	Zenith	62	103	1	○ ○ ○
SC62108	Zenith	62	103	2	○ ○ ○
SC63108	Bi Power	62	103	3	○ ○ ○ ○
SC64108	Long Life	62	103	4	○ ○ ○ ○
SC65108	Long Life	62	103	5	○ ○ ○ ○
SC66108	Long Life	62	103	6	○ ○ ○ ○
SC67108	Elettrolitica / Electroplated	62	103	1	○
SC68108	Elettrolitica / Electroplated	62	103	2	○

COD.	TIPO MOLA WHEEL TYPE	Ø MIN	Ø MAX	POS.	MATERIALE MATERIAL
SC72109	Frangistone	62	100	00	○ ○
SCR72109	Razorstone	62	120	0	○ ○
SC61109	Zenith	62	123	1	○ ○ ○
SC62109	Zenith	62	123	2	○ ○ ○
SC63109	Bi Power	62	123	3	○ ○ ○ ○
SC64109	Long Life	62	123	4	○ ○ ○ ○
SC65109	Long Life	62	123	5	○ ○ ○ ○
SC66109	Long Life	62	123	6	○ ○ ○ ○
SC67109	Elettrolitica / Electroplated	62	123	1	○
SC68109	Elettrolitica / Electroplated	62	123	2	○



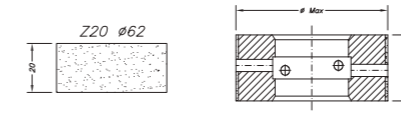
**YS12**

COD.	TIPO MOLA WHEEL TYPE	Ø MIN	Ø MAX	POS.	MATERIALE MATERIAL
SCR72260	Razorstone	62	70	0	○ ○
SC61260	Zenith	62	75	1	○ ○ ○
SC62260	Zenith	62	75	2	○ ○ ○
SC63260	Bi Power	62	75	3	○ ○ ○ ○
SC64260	Long Life	62	75	4	○ ○ ○ ○
SC65260	Long Life	62	75	5	○ ○ ○ ○
SC66260	Long Life	62	75	6	○ ○ ○ ○
SC75001	Perfector	62	62	-	○ ○ ○ ○
SC67260	Elettrolitica / Electroplated	62	62	1	○
SC68260	Elettrolitica / Electroplated	62	62	2	○



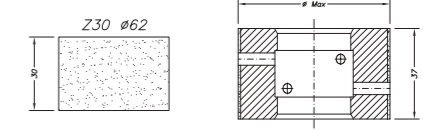
**YS20 3x3**

COD.	TIPO MOLA WHEEL TYPE	Ø MIN	Ø MAX	POS.	MATERIALE MATERIAL
SCR72120	Razorstone	62	91	0	○ ○
SC61120	Zenith	62	100	1	○ ○ ○
SC62120	Zenith	62	100	2	○ ○ ○
SC63120	Bi Power	62	100	3	○ ○ ○ ○
SC64120	Long Life	62	100	4	○ ○ ○ ○
SC65120	Long Life	62	100	5	○ ○ ○ ○
SC66120	Long Life	62	100	6	○ ○ ○ ○
SC75001	Perfector	62	62	-	○ ○ ○ ○
SC67120	Elettrolitica / Electroplated	62	100	1	○
SC68120	Elettrolitica / Electroplated	62	100	2	○



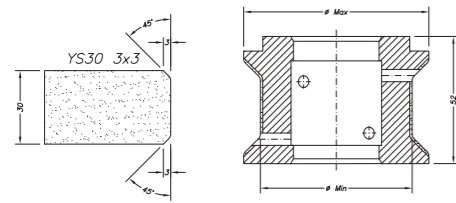
**Z20**

COD.	TIPO MOLA WHEEL TYPE	Ø MIN	Ø MAX	POS.	MATERIALE MATERIAL
SCR72033	Razorstone	62	62	0	○ ○
SC61033	Zenith	62	62	1	○ ○ ○
SC62033	Zenith	62	62	2	○ ○ ○
SC63033	Bi Power	62	62	3	○ ○ ○ ○
SC64033	Long Life	62	62	4	○ ○ ○ ○
SC65033	Long Life	62	62	5	○ ○ ○ ○
SC66033	Long Life	62	62	6	○ ○ ○ ○
SC75001	Perfector	62	62	-	○ ○ ○ ○
SC67033	Elettrolitica / Electroplated	62	62	1	○
SC68033	Elettrolitica / Electroplated	62	62	2	○



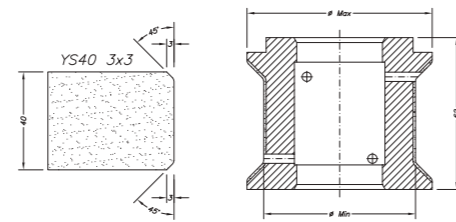
**Z30**

COD.	TIPO MOLA WHEEL TYPE	Ø MIN	Ø MAX	POS.	MATERIALE MATERIAL
SCR72034	Razorstone	62	62	0	○ ○
SC61034	Zenith	62	62	1	○ ○ ○
SC62034	Zenith	62	62	2	○ ○ ○
SC63034	Bi Power	62	62	3	○ ○ ○ ○
SC64034	Long Life	62	62	4	○ ○ ○ ○
SC65034	Long Life	62	62	5	○ ○ ○ ○
SC66034	Long Life	62	62	6	○ ○ ○ ○
SC75001	Perfector	62	62	-	○ ○ ○ ○
SC67034	Elettrolitica / Electroplated	62	62	1	○
SC68034	Elettrolitica / Electroplated	62	62	2	○



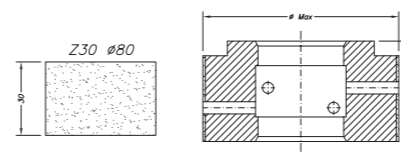
**YS30 3x3**

COD.	TIPO MOLA WHEEL TYPE	Ø MIN	Ø MAX	POS.	MATERIALE MATERIAL
SCR72121	Razorstone	62	70	0	○ ○
SC61121	Zenith	62	76	1	○ ○ ○
SC62121	Zenith	62	76	2	○ ○ ○
SC63121	Bi Power	62	76	3	○ ○ ○ ○
SC64121	Long Life	62	76	4	○ ○ ○ ○
SC65121	Long Life	62	76	5	○ ○ ○ ○
SC66121	Long Life	62	76	6	○ ○ ○ ○
SC75001	Perfector	62	62	-	○ ○ ○ ○
SC67121	Elettrolitica / Electroplated	62	76	1	○
SC68121	Elettrolitica / Electroplated	62	76	2	○



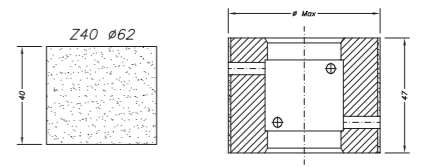
**YS40 3x3**

COD.	TIPO MOLA WHEEL TYPE	Ø MIN	Ø MAX	POS.	MATERIALE MATERIAL
SCR72124	Razorstone	62	70	0	○ ○
SC61124	Zenith	62	76	1	○ ○ ○
SC62124	Zenith	62	76	2	○ ○ ○
SC63124	Bi Power	62	76	3	○ ○ ○ ○
SC64124	Long Life	62	76	4	○ ○ ○ ○
SC65124	Long Life	62	76	5	○ ○ ○ ○
SC66124	Long Life	62	76	6	○ ○ ○ ○
SC75001	Perfector	62	62	-	○ ○ ○ ○
SC67124	Elettrolitica / Electroplated	62	76	1	○
SC68124	Elettrolitica / Electroplated	62	76	2	○



**Z30 Ø80**

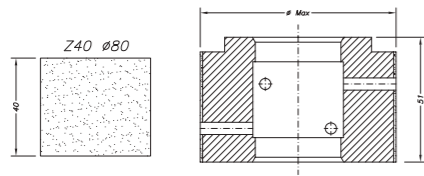
COD.	TIPO MOLA WHEEL TYPE	Ø MIN	Ø MAX	POS.	MATERIALE MATERIAL
SCR72G001	Razorstone	80	80	0	○ ○
SC61G001	Zenith	80	80	1	○ ○ ○
SC62G001	Zenith	80	80	2	○ ○ ○
SC63G001	Bi Power	80	80	3	○ ○ ○ ○
SC64G001	Long Life	80	80	4	○ ○ ○ ○
SC65G001	Long Life	80	80	5	○ ○ ○ ○
SC66G001	Long Life	80	80	6	○ ○ ○ ○
SC75001	Perfector	62	62	-	○ ○ ○ ○
SC67G001	Elettrolitica / Electroplated	80	80	1	○
SC68G001	Elettrolitica / Electroplated	80	80	2	○



**Z40**

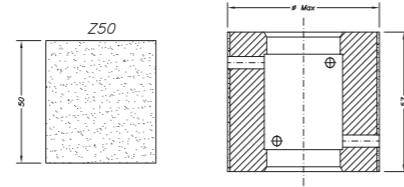
COD.	TIPO MOLA WHEEL TYPE	Ø MIN	Ø MAX	POS.	MATERIALE MATERIAL
SCR72035	Razorstone	62	62	0	○ ○
SC61035	Zenith	62	62	1	○ ○ ○
SC62035	Zenith	62	62	2	○ ○ ○
SC63035	Bi Power	62	62	3	○ ○ ○ ○
SC64035	Long Life	62	62	4	○ ○ ○ ○
SC65035	Long Life	62	62	5	○ ○ ○ ○
SC66035	Long Life	62	62	6	○ ○ ○ ○
SC75002	Perfector	62	62	-	○ ○ ○ ○
SC67035	Elettrolitica / Electroplated	62	62	1	○
SC68035	Elettrolitica / Electroplated	62	62	2	○





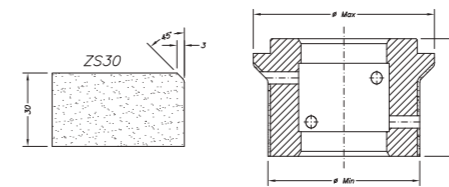
**Z40 Ø80**

COD.	TIPO MOLA WHEEL TYPE	Ø MIN	Ø MAX	POS.	MATERIALE MATERIAL
SCR72G002	Razorstone	80	80	0	○ ○
SC61G002	Zenith	80	80	1	○ ○ ○
SC62G002	Zenith	80	80	2	○ ○ ○
SC63G002	Bi Power	80	80	3	○ ○ ○ ○
SC64G002	Long Life	80	80	4	○ ○ ○ ○
SC65G002	Long Life	80	80	5	○ ○ ○ ○
SC66G002	Long Life	80	80	6	○ ○ ○ ○
SC75002	Perfector	62	62	-	○ ○ ○ ○
SC67G002	Elettrolitica / Electroplated	80	80	1	○
SC68G002	Elettrolitica / Electroplated	80	80	2	○



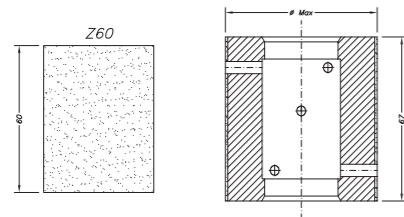
**Z50**

COD.	TIPO MOLA WHEEL TYPE	Ø MIN	Ø MAX	POS.	MATERIALE MATERIAL
SCR72036	Razorstone	62	62	0	○ ○
SC61036	Zenith	62	62	1	○ ○ ○
SC62036	Zenith	62	62	2	○ ○ ○
SC63036	Bi Power	62	62	3	○ ○ ○ ○
SC64036	Long Life	62	62	4	○ ○ ○ ○
SC65036	Long Life	62	62	5	○ ○ ○ ○
SC66036	Long Life	62	62	6	○ ○ ○ ○
SC75002	Perfector	62	62	-	○ ○ ○ ○
SC67036	Elettrolitica / Electroplated	62	62	1	○
SC68036	Elettrolitica / Electroplated	62	62	2	○



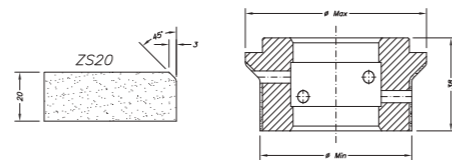
**ZS30**

COD.	TIPO MOLA WHEEL TYPE	Ø MIN	Ø MAX	POS.	MATERIALE MATERIAL
SCR72041	Razorstone	62	74	0	○ ○
SC61041	Zenith	62	74	1	○ ○ ○
SC62041	Zenith	62	74	2	○ ○ ○
SC63041	Bi Power	62	74	3	○ ○ ○ ○
SC64041	Long Life	62	74	4	○ ○ ○ ○
SC65041	Long Life	62	74	5	○ ○ ○ ○
SC66041	Long Life	62	74	6	○ ○ ○ ○
SC75001	Perfector	62	62	-	○ ○ ○ ○
SC67041	Elettrolitica / Electroplated	62	74	1	○
SC68041	Elettrolitica / Electroplated	62	74	2	○



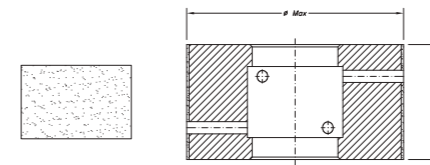
**Z60**

COD.	TIPO MOLA WHEEL TYPE	Ø MIN	Ø MAX	POS.	MATERIALE MATERIAL
SCR72037	Razorstone	62	62	0	○ ○
SC61037	Zenith	62	62	1	○ ○ ○
SC62037	Zenith	62	62	2	○ ○ ○
SC63037	Bi Power	62	62	3	○ ○ ○ ○
SC64037	Long Life	62	62	4	○ ○ ○ ○
SC65037	Long Life	62	62	5	○ ○ ○ ○
SC66037	Long Life	62	62	6	○ ○ ○ ○
SC75003	Perfector	62	62	-	○ ○ ○ ○
SC67037	Elettrolitica / Electroplated	62	62	1	○
SC68037	Elettrolitica / Electroplated	62	62	2	○



**ZS20**

COD.	TIPO MOLA WHEEL TYPE	Ø MIN	Ø MAX	POS.	MATERIALE MATERIAL
SCR72070	Razorstone	62	70	0	○ ○
SC61040	Zenith	62	70	1	○ ○ ○
SC62040	Zenith	62	70	2	○ ○ ○
SC63040	Bi Power	62	70	3	○ ○ ○ ○
SC64040	Long Life	62	70	4	○ ○ ○ ○
SC65040	Long Life	62	70	5	○ ○ ○ ○
SC66040	Long Life	62	70	6	○ ○ ○ ○
SC75001	Perfector	62	62	-	○ ○ ○ ○
SC67040	Elettrolitica / Electroplated	62	70	1	○
SC68040	Elettrolitica / Electroplated	62	70	2	○



**PERFECTOR**

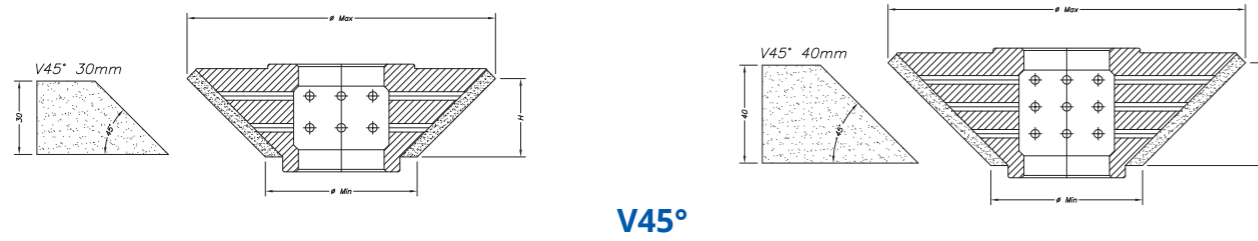
COD.	Ø (mm)	H (mm)	MATERIALE MATERIAL
SC75001	62	45	○ ○ ○ ○
SC75002	62	60	○ ○ ○ ○
SC75003	62	90	○ ○ ○ ○
SC75004	90	45	○ ○ ○ ○
SC75005	90	60	○ ○ ○ ○
SC75006	90	90	○ ○ ○ ○



Appositamente concepita per eliminare le righe su bordi diritti lucidati con mole sagomate.

Studied to eliminate lines on straight edges polished with profile wheels.

MOLE SAGOMATE LINEA 60 / LINE 60 PROFILE WHEELS



V45°

20-30 (mm)

40 (mm)

COD.	TIPO MOLA WHEEL TYPE	Ø MIN	Ø MAX	PASS.	H	MATERIALE MATERIAL
SC72149	Frangistone	62	124	1	32	○ ○
SC60257	Settori / Segmented	62	126	2	32	○ ○
SC61257	Zenith	62	126	3	32	○ ○ ○

COD.	TIPO MOLA WHEEL TYPE	Ø MIN	Ø MAX	PASS.	H	MATERIALE MATERIAL
SC72256	Frangistone	62	139	1	42	○ ○
SC60256	Settori / Segmented	62	146	2	42	○ ○
SC61256	Zenith	62	146	3	42	○ ○ ○



FRANGISTONE

SETTORI /  
SEGMENTED

ZENITH

- Kit appositamente sviluppato per realizzare lo smusso a 45° quale punto di giunzione per l'incollaggio delle lastre
- Il legante specifico del terzo passaggio lascia la superficie con una porosità ideale per l'applicazione del mastice
- Realizzato con Tecnologia Frangistone/Zenith
- Foro 35 mm

- Set designed to achieve the bevel miter at 45° as a point of junction between slabs.
- After the third pass, the rough surface of the slab is ideal for applying mastic.
- Realized with Frangistone/Zenith Technology
- Bore 35 mm

LEGENDA MATERIALE  
LEGEND MATERIAL:



LEGENDA MATERIALE  
LEGEND MATERIAL:

